

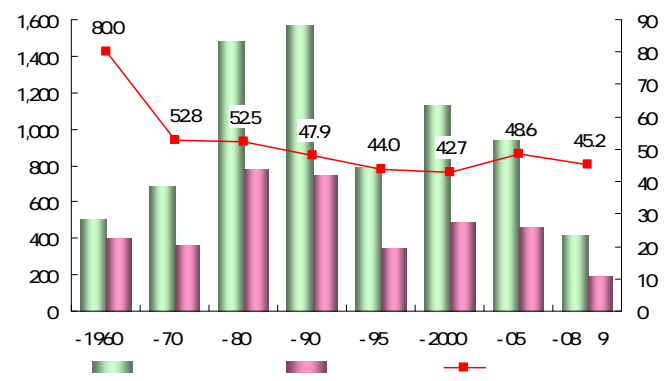
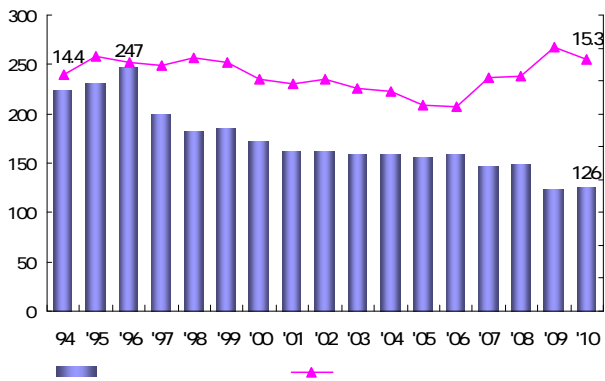
()



70 80 10 12.6 96 4

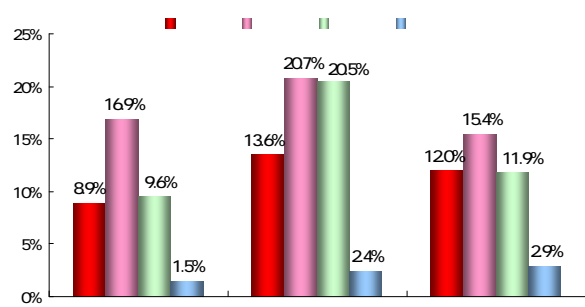
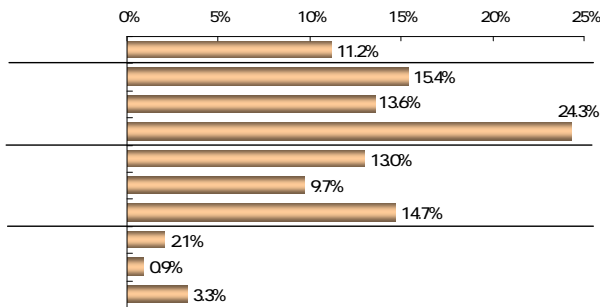
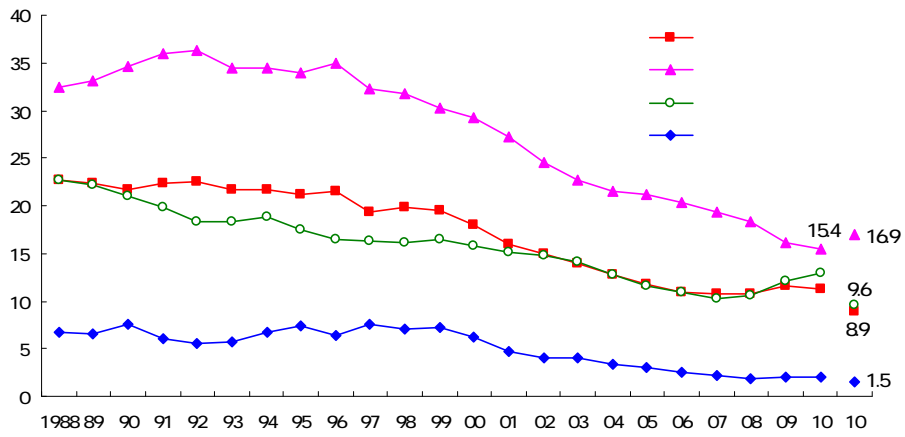
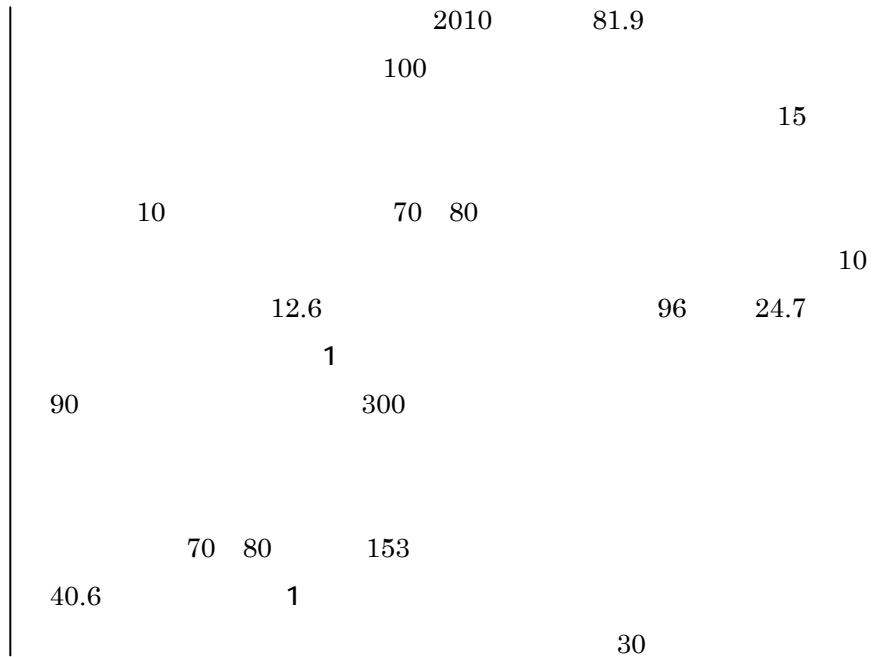
60

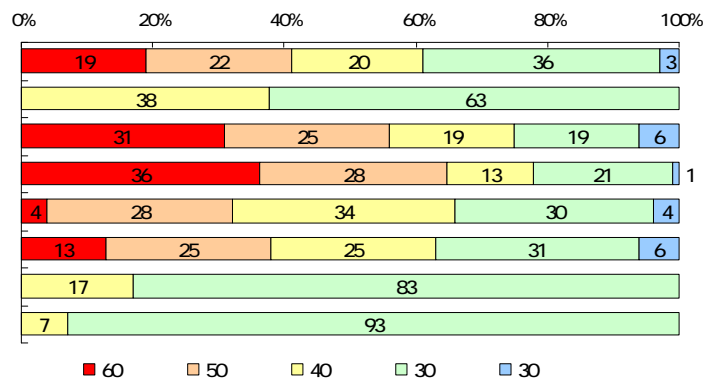
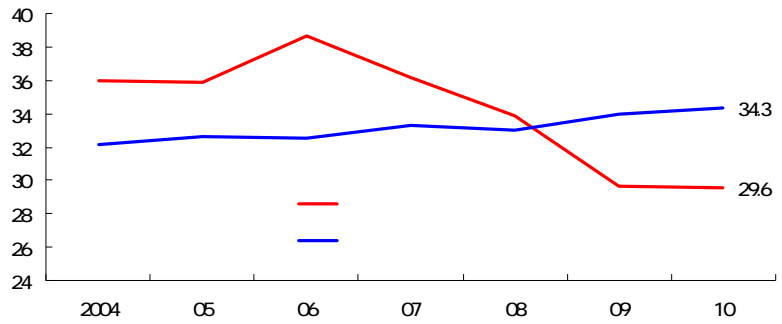
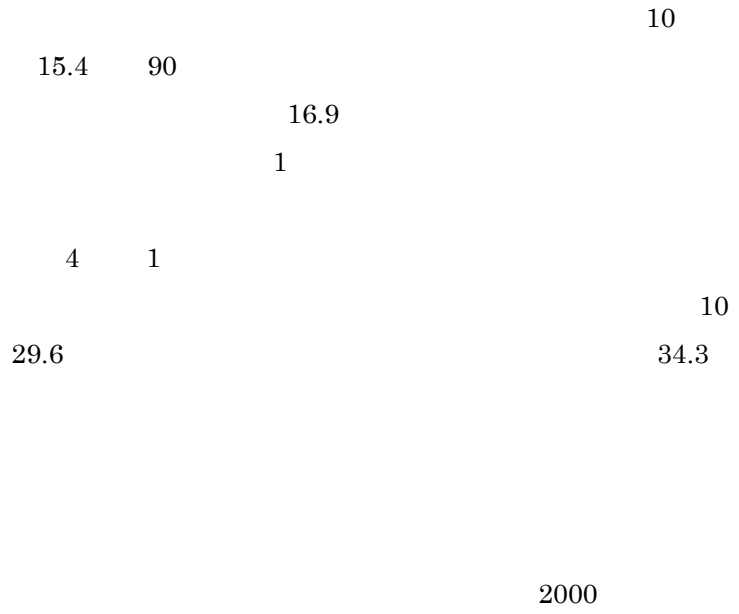
10



20

()





23 10

()



()					
()					
()					

HP

()

	60 1 2 5 5 30 30 60	60 2 3 5 5 60 20 20
	98 11 1 1100	20

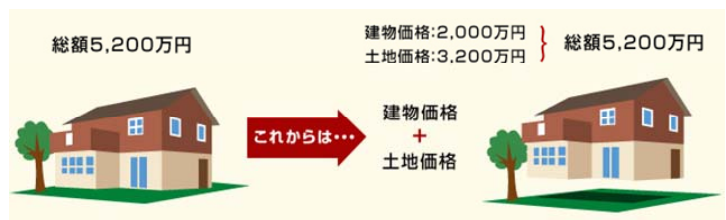
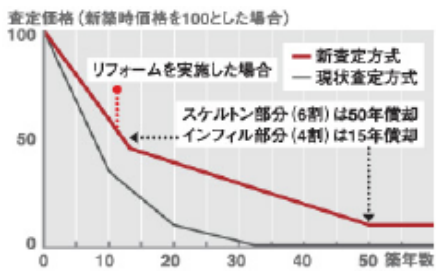
		2
60		
30	5	30
		60
		60
	20	20




()

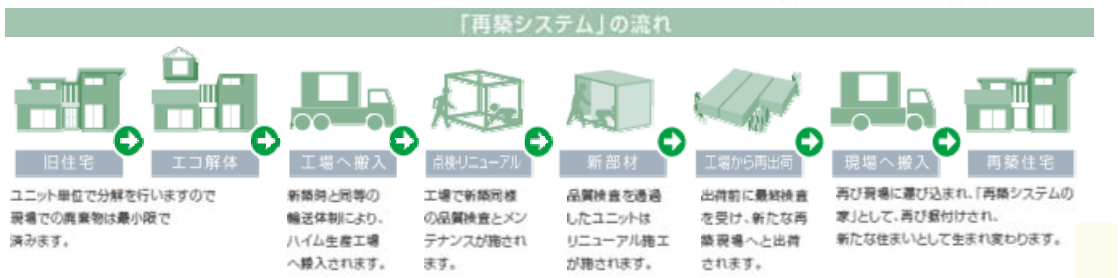


10

	×		
	×		
() ())	×		50
	×		()
	×		



			<p>Reduce 廃棄物削減・長期使用</p> <p>廃棄物の発生そのものを抑制すること、原材料の効率的な利用、製品の長寿命化を通じ、設計・製造から流通まで廃棄物となる資源の利用を極力少なくすることです。</p>	<p>Reuse 再利用</p> <p>使用を終えた製品を、必要に応じ適切な処置を施し、基本的な形を変えずに再び用いることです。再利用化プロセスにおける環境負荷が少なくて済みます。</p>	<p>Recycle 再資源化</p> <p>有価物の再生使用を言います。一度使用された製品や製造に伴い発生する副産物を回収し、原材料としての再利用と焼却熱のエネルギーとしての再利用があります。</p>
---	---	---	--	---	--



<p>Before</p> <p>古くなった住まいをリフレッシュしたい</p> <p>再築リノベーションで外観・性能までリニューアル!</p> 		<p>After</p> 	
--	---	--	---

10



10



70

before

after

▲価格

新築価格

新築分譲価格

再分譲予定価格

独自の査定方式

再生費用、諸費用

購入査定価格

従来の査定方式

売却査定価格

20年前

現在

時間▶

※売買単価は変動がないものとする。

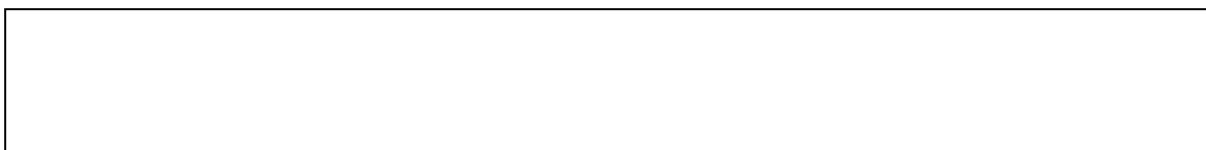
3 1 10

10

70

|

()



2010 20 114
 78 68.4
 51 27

= ÷ 5

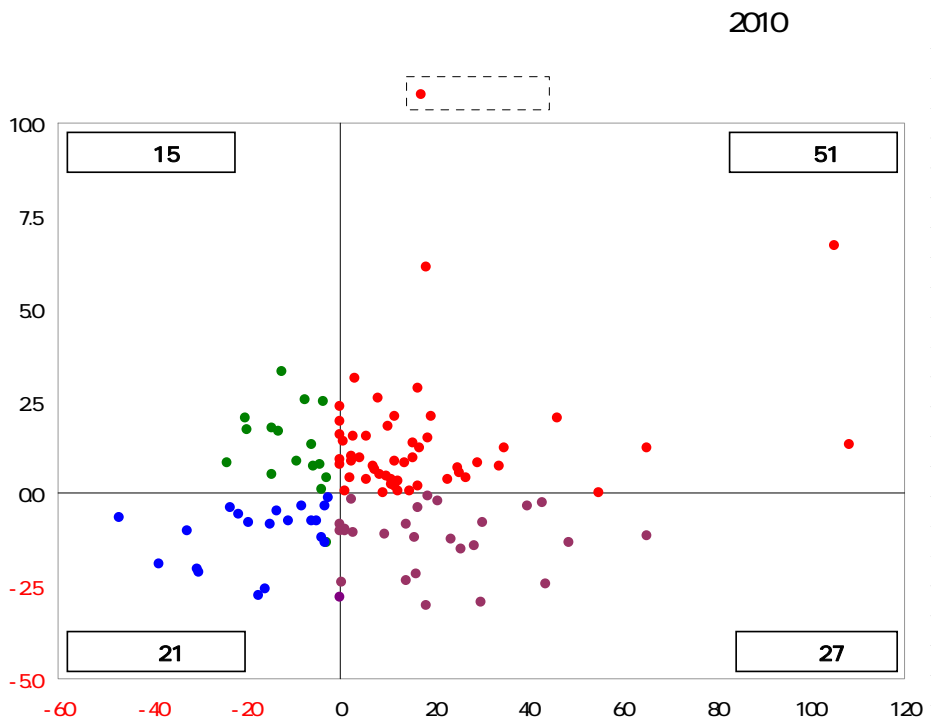
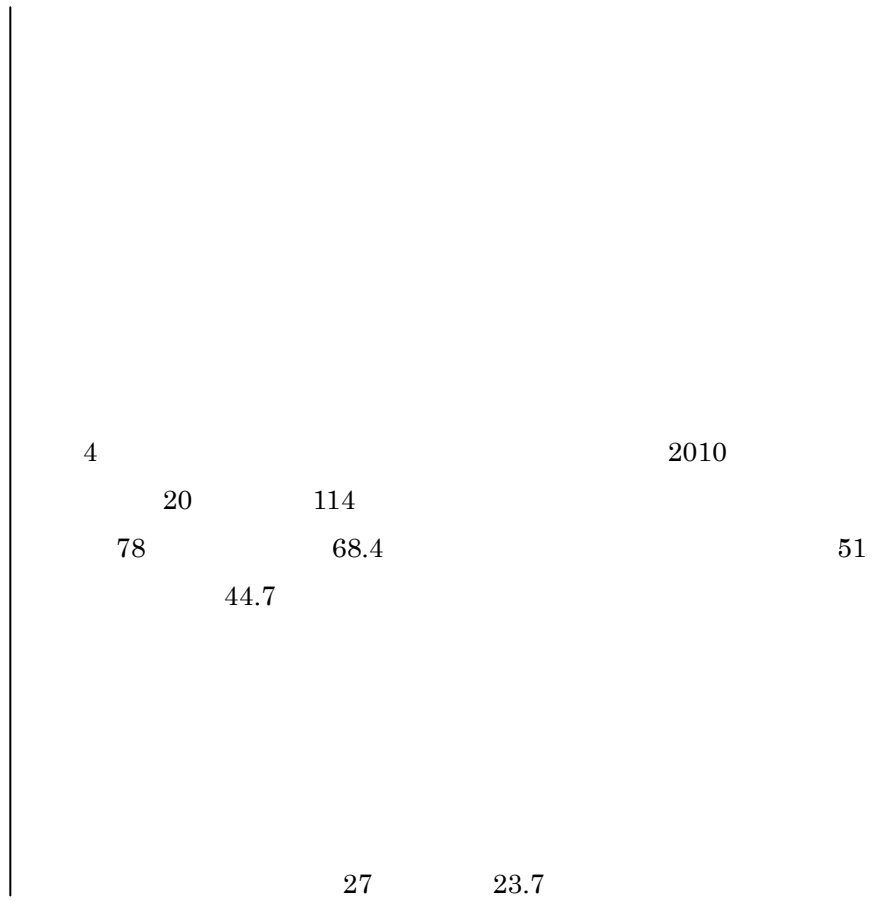
40 50

2010 15

No.	05			05			05			05		
1	57	0.66	0.22	1,656	-20.4	225.6	-19.5	111.6	-16.2	22.5	6.6	
2	136	0.59	0.00	2,054	-9.1	214.6	-1.6	127.0	5.3	17.0	0.6	
3	27	0.51	0.08	1,884	-8.5	270.0	40.3	117.7	10.9	22.4	0.2	
4	197	0.50	-0.07	1,821	-16.7	164.8	0.0	106.6	-0.1	21.0	-0.3	
5	140	0.49	0.04	2,274	-12.6	217.6	1.9	116.6	1.6	21.4	-0.7	
6	138	0.47	0.09	2,702	-1.0	124.3	0.9	103.4	7.9	21.4	-1.7	
7	203	0.44	0.06	2,631	0.8	184.8	2.8	120.3	6.2	18.8	1.1	
8	125	0.44	0.03	1,756	-13.7	197.7	6.1	114.6	6.1	23.2	1.8	
9	118	0.43	0.16	2,309	-25.8	103.7	-7.4	95.0	-5.8	24.3	-1.4	
10	172	0.43	0.15	2,627	-8.6	153.8	-10.8	113.2	-0.3	20.9	-2.0	
11	201	0.41	-0.04	1,780	-12.2	189.0	-0.7	116.8	0.4	19.9	-0.1	
12	95	0.40	0.01	1,516	-14.2	107.9	9.9	86.8	2.0	25.5	4.3	
13	147	0.40	0.07	1,854	-10.2	130.7	-3.3	100.8	1.3	24.9	0.7	
14	90	0.40	-0.00	1,944	-7.9	136.3	-4.6	101.6	-2.0	24.5	2.0	
15	40	0.40	0.06	1,484	-8.7	55.8	-4.8	94.2	10.5	27.3	7.2	

* = ÷ 2010 2005 20

()



2010

		1083	1.3			653	-1.1		-25	-0.1
		1050	6.7			488	-1.3		-28	-1.3
		654	1.2			437	-2.5		-3.2	-0.3
		550	0.0			430	-0.3		-3.2	-1.4
		462	2.0			400	-0.3		-3.8	-1.2
		348	1.2			303	-0.8		-4.9	-0.8
		340	0.7			301	-2.9		-5.9	-0.8
		292	0.8			286	-1.4		-8.0	-0.3
		267	0.4			258	-1.5		-10.8	-0.8
		255	0.6			238	-1.2		-13.6	-0.5
		250	0.7			209	-0.2		-14.7	-0.9
		231	0.4			188	-0.1		-15.8	-2.6
		196	2.1			185	-3.0		-17.4	-2.8
		188	1.5			167	-0.4		-19.5	-0.8
		185	6.1			161	-2.2		-21.4	-0.5
		17.0	1.2			158	-1.2		-23.3	-0.4
		167	2.8			140	-0.8		-30.0	-2.2
		165	0.2			140	-2.4		-30.2	-2.1
		157	0.9			95	-1.1		-32.5	-1.0
		154	1.4			30	-1.1		-38.5	-1.9
		150	0.0			26	-0.1		-47.1	-0.7
		136	0.8			1.2	-1.0			
		125	0.3			1.1	-1.0			
		122	0.0			0.5	-2.4			
		11.7	2.1			0.0	-0.8			
		11.6	0.2			0.0	-1.0			
		11.5	0.9			0.0	-2.8			
		11.1	0.4				-2.9		0.4	
		11.1	0.2				-3.7		2.5	
		10.3	1.8				-3.8		0.1	
		10.0	0.5				-4.3		0.8	
		9.0	0.0				-5.5		0.7	
		8.5	0.5				-6.0		1.3	
		8.1	2.6				-7.5		2.5	
		7.5	0.6				-9.1		0.9	
		6.9	0.7				-12.5		3.3	
		5.6	1.5				-12.9		1.7	
		5.5	0.4				-14.4		0.5	
		4.2	1.0				-14.5		1.8	
		3.3	3.1				-19.6		1.7	
		2.9	1.6				-20.0		2.0	
		2.6	1.0				-24.1		0.8	
		2.4	0.9							
		2.2	0.4							
		1.0	0.1							
		0.8	1.4							
		0.0	2.4							
		0.0	2.0							
		0.0	1.6							
		0.0	0.9							
		0.0	0.8							

15

13.2

21

18.4



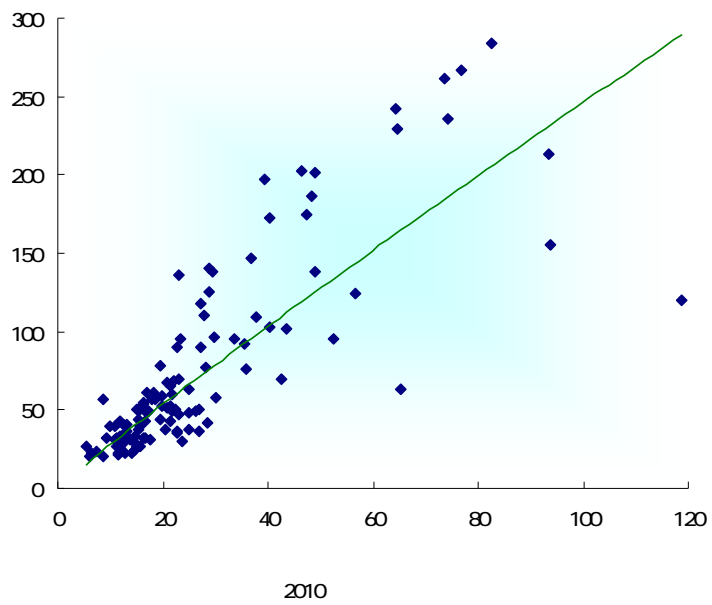
= ÷

30

0.66

3.22

2010

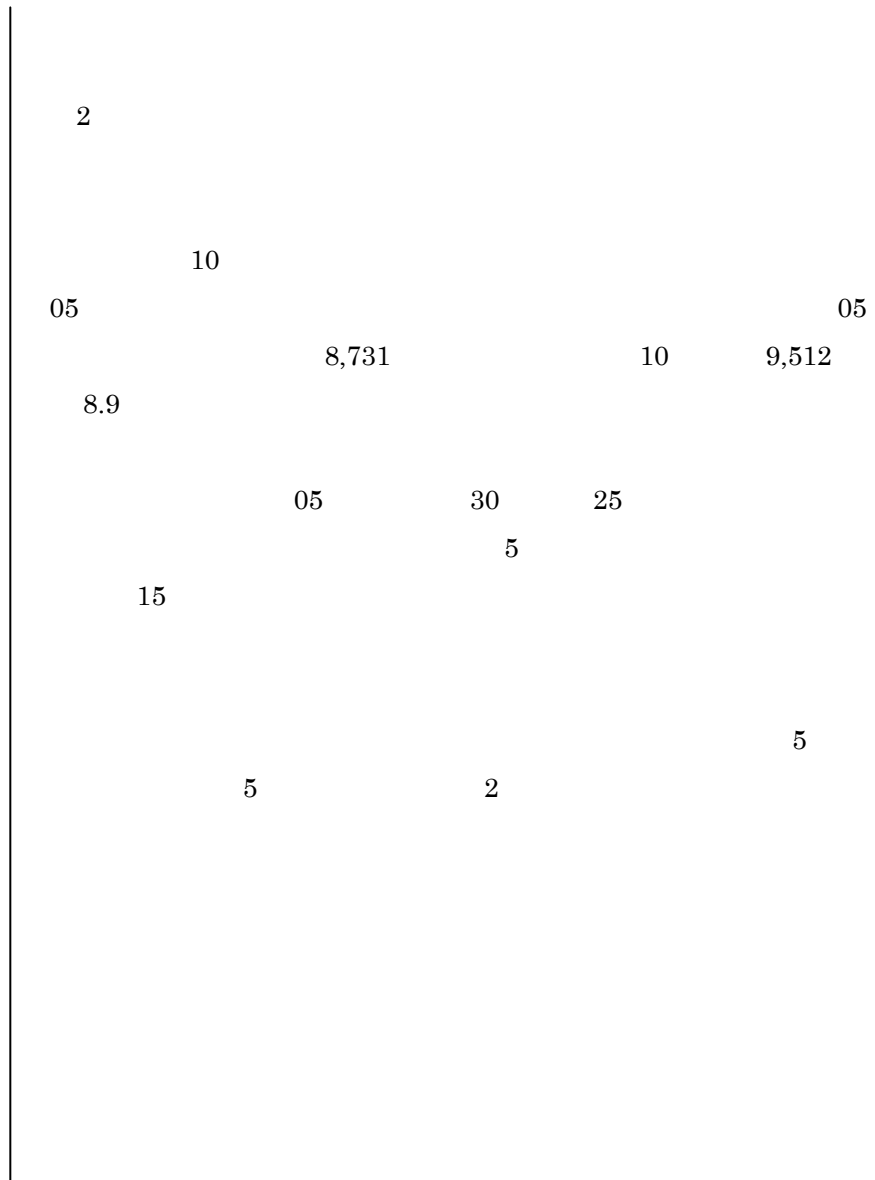


()

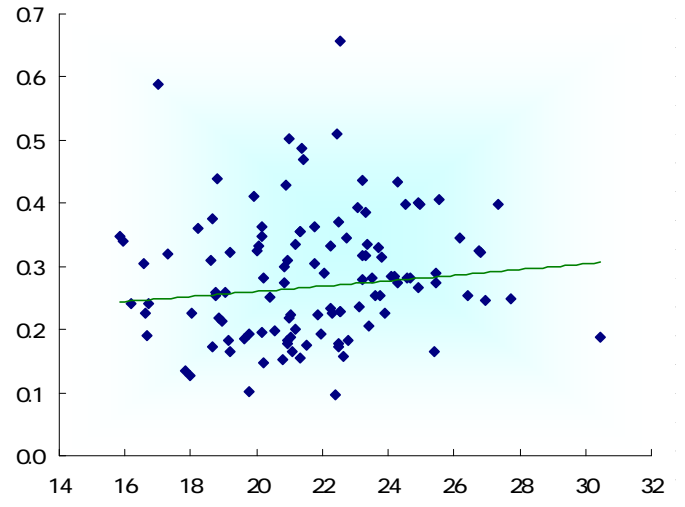
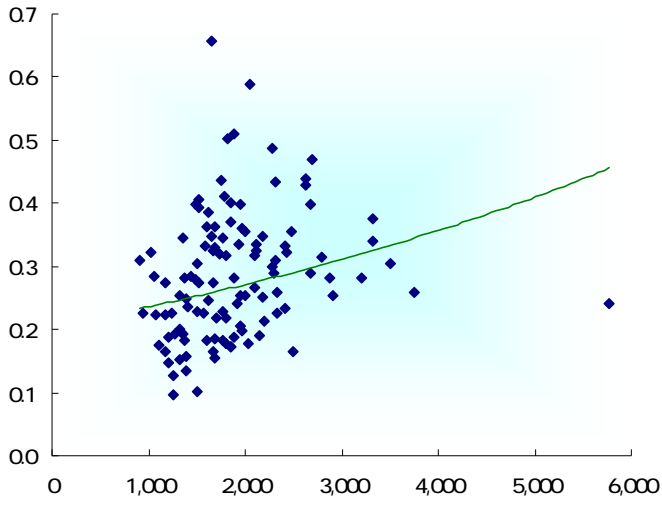
2010 16 30

No.	05			05			05			05		
16	110	0.39	-0.03	1,515	-11.1	84.4	-1.6	85.7	2.0	23.1	0.5	
17	186	0.38	0.05	1,622	-8.1	85.5	2.3	85.5	1.5	23.3	-0.1	
18	242	0.38	0.00	3,325	10.8	154.5	-1.4	118.6	1.3	18.6	-0.0	
19	175	0.37	-0.05	1,843	-14.6	116.4	-3.6	95.1	-5.5	22.5	0.5	
20	61	0.36	0.07	1,604	-10.1	65.1	-6.6	85.0	4.2	21.8	-0.7	
21	43	0.36	0.17	1,964	-2.6	182.9	-4.6	106.3	-1.6	18.2	-4.3	
22	261	0.35	0.04	2,477	6.8	113.1	5.1	101.6	2.3	21.3	-0.2	
23	229	0.35	0.02	1,994	11.7	78.0	16.2	95.0	16.1	21.3	-1.6	
24	32	0.35	0.10	2,189	-15.9	165.9	-15.4	108.6	-3.9	15.8	2.0	
25	267	0.35	-0.04	1,651	-11.6	163.8	2.5	106.0	-0.5	20.2	-0.2	
26	22	0.35	-0.09	1,362	-11.8	221.5	11.3	117.1	12.6	26.2	1.7	
27	284	0.34	-0.02	1,771	-2.0	114.5	10.4	101.9	10.3	22.7	-0.0	
28	55	0.34	0.11	3,321	0.7	106.9	13.9	111.8	7.0	15.9	2.1	
29	61	0.33	0.13	1,933	-10.0	134.6	12.8	104.7	2.6	23.3	3.3	
30	50	0.33	0.06	2,124	-23.3	68.9	-22.4	76.0	-22.8	21.2	-4.9	

* = ÷ 2010 2005 20



()



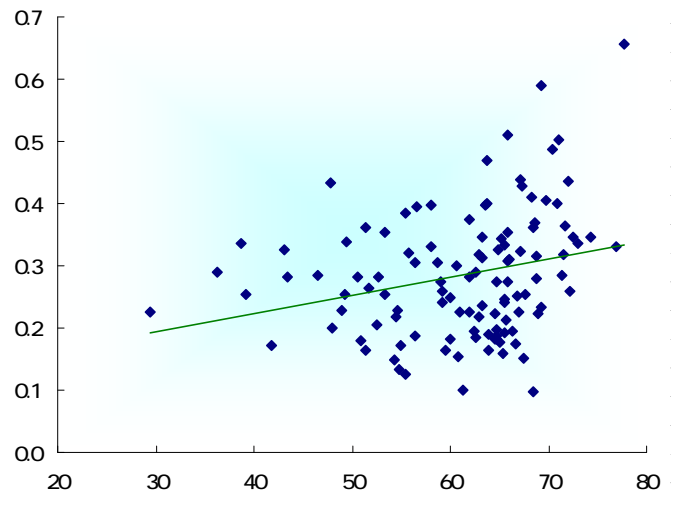
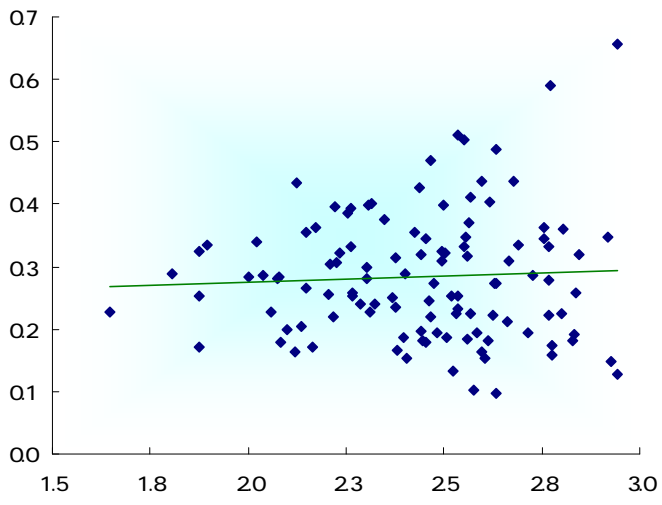
70

29.4

77.6

0.23

()



2010

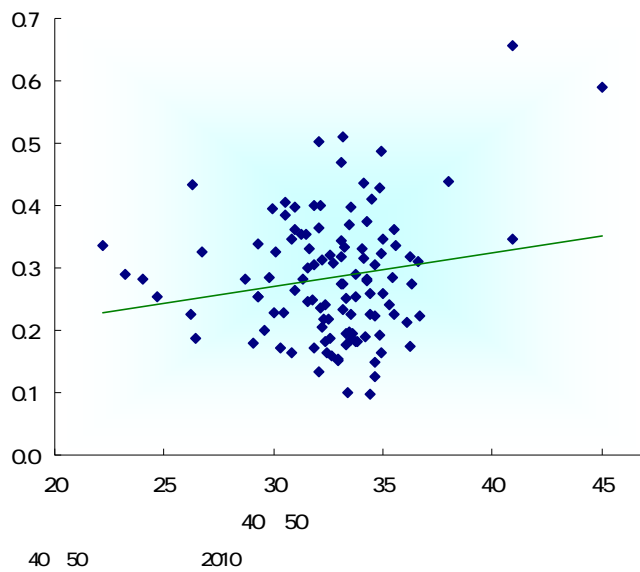


40 50

40 50

40

30



|